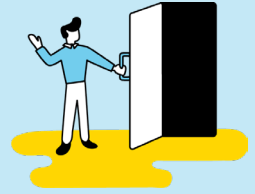


WELCOME BACK!

As we return to in-person services, First Baptist Bryan is implementing these nine procedures to help ensure a safe and healthy worship environment.

1. GREETERS WILL OPEN DOORS AS YOU ARRIVE.



2. MASKS ARE REQUIRED IN CERTAIN SPACES.

Masks are required in our Children's Wing. We also recommend them in other spaces where it is difficult to social distance.



3. PLEASE BE MINDFUL OF SOCIAL DISTANCING WHEN CHOOSING YOUR SEAT IN THE WORSHIP CENTER.



4. NO PASSING OF THE OFFERING PLATE.

Baskets for the offering will be at the two main entrances.



5. ONLY CONNECT CARDS WILL BE IN THE PEWS.

Bibles and offering envelopes will be available at the two main entrances.



6. DISMISSAL OF EACH SERVICE WILL BE DONE BY GROUPS.

We will dismiss the balcony sections first, followed by the lower sections closer to the stage.



7. THE WORSHIP CENTER AND RESTROOMS WILL BE SANITIZED BEFORE, AFTER AND IN BETWEEN SERVICES.



8. PREREGISTER FOR CHILDCARE AND KIDS SUNDAY SCHOOL.

Childcare for Kinder and under will be provided throughout the morning, and Sunday School will be available for kids during the 10 am hour.

Please register online by the Wednesday before.



9. LIVESTREAM SUNDAY MORNING SERVICES.

If you choose not to join us in person just yet, feel free to remain at home and join us for worship online.

